

Red Hat OpenStack Update

Chris Fields
Cloud Success Architect

Anthony Herr
Product Manager

Ben Schmaus
Sr. Technical Account Manager

WHAT IS OPENSTACK?



OPENSTACK POWERS DIGITAL BUSINESS

Brings public cloud capabilities into your datacenter

Provides massive on-demand (scale-out) capacity:

1,000's 10,000's 100k's of VMs

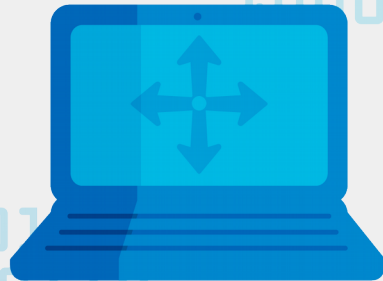
Removes vendor lock-in

Open source provides high-degree of flexibility to customize and interoperate

Community development = higher “feature velocity”

Features & functions you need, faster to market over proprietary software

Greater automation, resource provisioning, and scaling



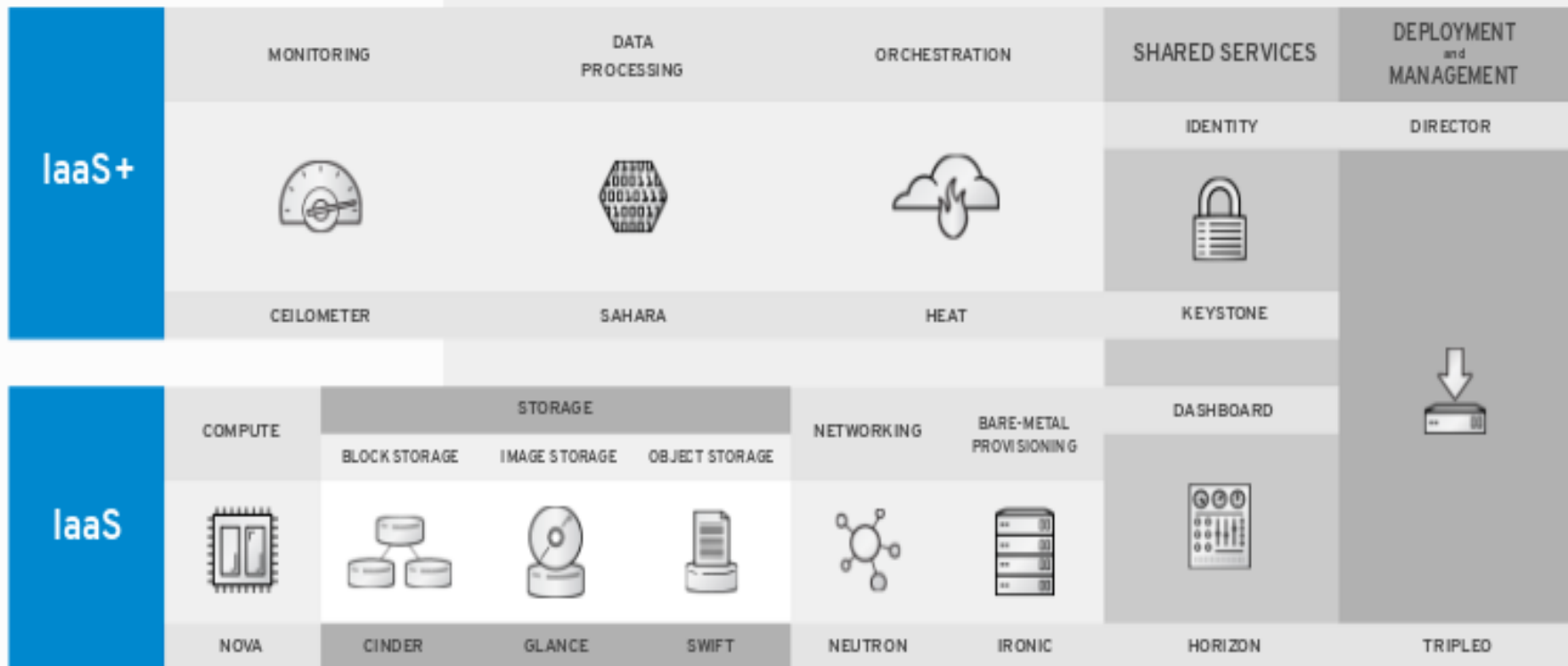
<https://www.openstack.org/marketplace> - great place to understand OpenStack offerings

CLOUD INFRASTRUCTURE FOR CLOUD WORKLOADS

Modular architecture

Designed to easily scale out

Based on set of core services



What are common use-cases for the Red Hat OpenStack Platform?

- Private IaaS Cloud
- Service providers using NFV
- Public cloud
- OpenShift on OpenStack

Current Red Hat OpenStack

- Red Hat OpenStack 12
 - Containers
 - Ansible
 - Network Composability
 - Telco Speed
 - Security

Red Hat OpenStack Lifecycle

Fast & Slow Train

		Long Life			Long Life			
RHOSP 8 Liberty	RHOSP 9 Mitaka	RHOSP 10 Newton	RHOSP 11 Ocata	RHOSP 12 Peak	RHOSP 13 Q...	RHOSP 14 R...	RHOSP 15 S...	...
3 years	3 years	3 years (+2 years)*	1 year	1 year	3 years (+2 years)*	1 year	1 year	...

Every **6 month** release of RHOSP is supported for 1 year

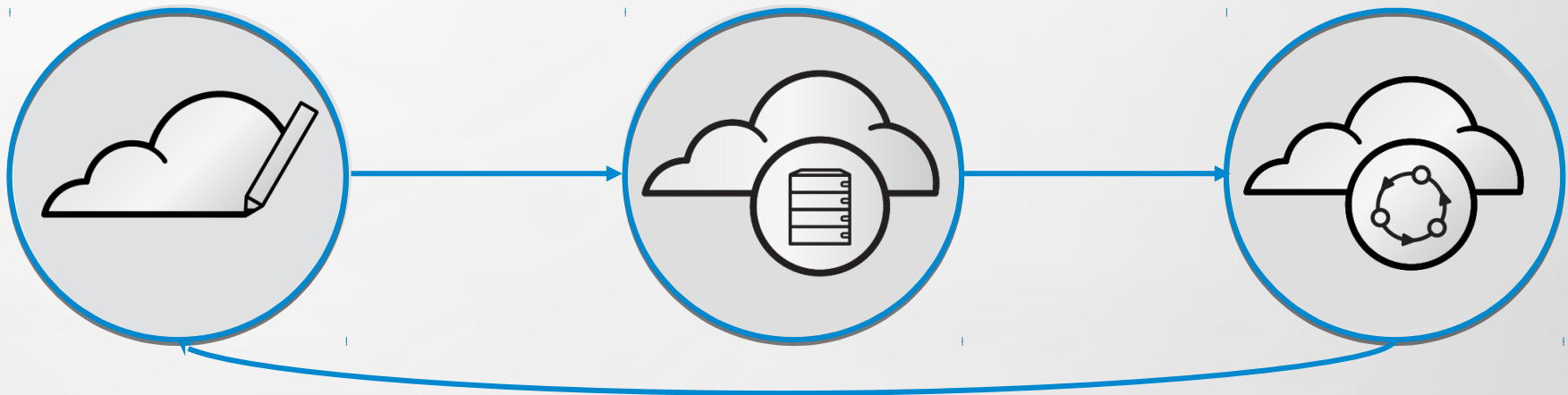
- No feature backports (Production Phase 2 from the start)
- In-place/online upgrades supported during this timeframe from n to n+1

Every **18 months**, we elect an extended life support version (Long Life releases)

- Selected Backports available to Long Life releases
- In-place upgrades “**N** → **N+1**” from this release supported if done within year one (6 month buffer)
- Upgrades “**Long Life** → **Long Life**” will be done via automated migration with provided tooling.
- Support of single major version of RHEL (w/ minor releases)

Red Hat OpenStack Director

LIFECYCLE



PLANNING

Network topology
Service parameters
Resource capacity

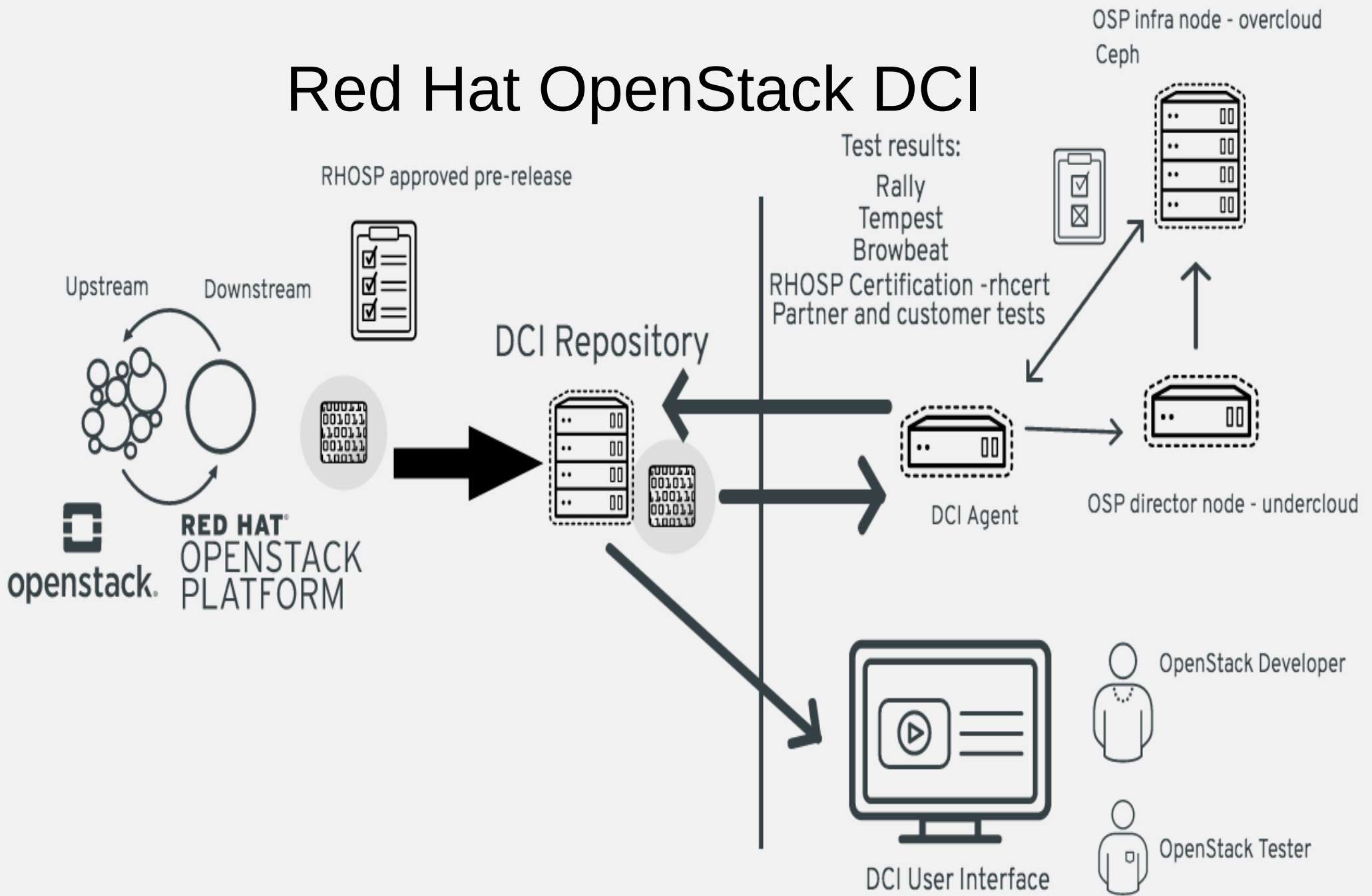
DEPLOYMENT

Deployment orchestration
Service configuration
Sanity checks

OPERATIONS

Updates and upgrades
Scaling up and down
Change management

Red Hat OpenStack DCI



Questions?