

# Package Wrangler for Engineers

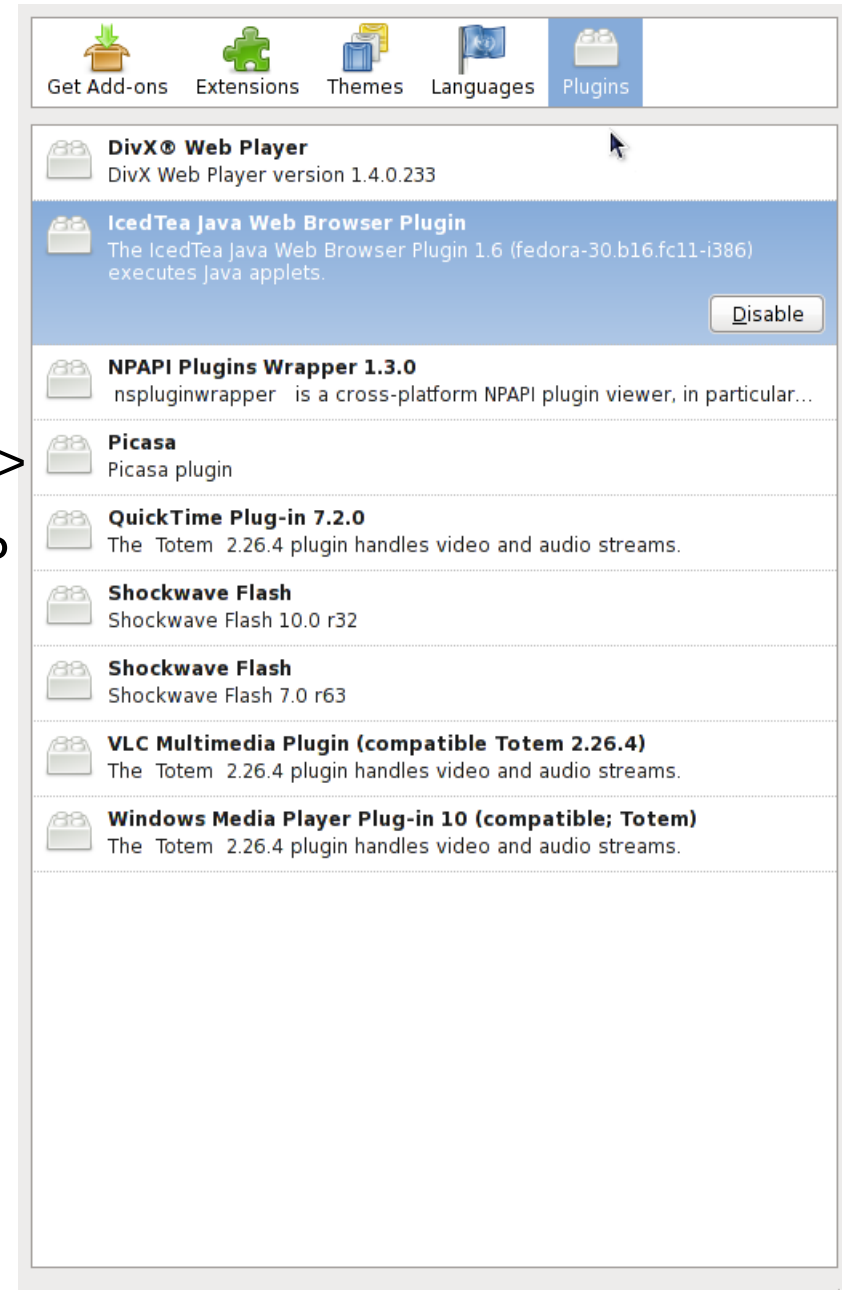
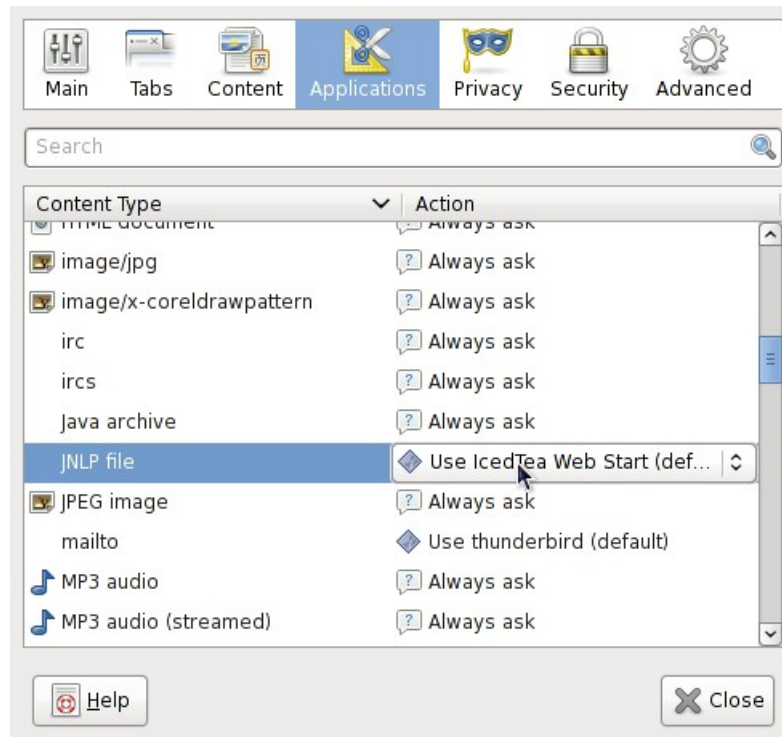


## Agenda

- Live demo
- Where does it live?
- Backup slides

## Live demo - Elluminate

- Check that you have IcedTea Enabled ->
- IcedTea has to be associated with JNLP



<https://sas.illuminate.com/m.jnlp?password=M.87B41EC13BECA328C55F79>



## Live demo - VNC

- `vncviewer/vinagre silver.englab.brq.redhat.com`
- IRC channel for questions: `#pkgwrangler`



## **Live demo didn't work out**

- Follow the screenshots in next slides

## Where does it live?

- **Home**  
<https://pkgdb.lab.eng.bos.redhat.com>
- **FAQ**  
<http://intranet.corp.redhat.com/ic/intranet/PackageWrangler.html>
- **Docs&Tutorial**  
<https://engineering.redhat.com/trac/pkgdb/wiki/Handbook>

## Overview

### Assigned SRPMs

3 found. [\[show last\]](#) [\[show all\]](#)

### Assigned reviews

2 found. [\[show last\]](#) [\[show all\]](#)

### Reviews prepared for approval/rejection

1 found. [\[show last\]](#) [\[show all\]](#)

### Team packages under review

458 found. [\[show last\]](#) [\[show all\]](#)

### Reviews being done by team ([Set reviewers](#))

7 found. [\[show last\]](#) [\[show all\]](#)

[Comments and tickets here](#)

Copyright © Red Hat, Inc. All rights reserved.

## Overview

### Assigned SRPMs

3 found. [\[show overview\]](#)

Pages: 1

SRPM	State	Product version	Created
<a href="#">finger-0.17-38.el6</a>	ON_REVIEW	<a href="#">RHEL-6.0</a>	2009-10-02 06:49:55
<a href="#">libsmi-0.4.8-3.el6</a>	ON_REVIEW	<a href="#">RHEL-6.0</a>	2009-10-02 09:53:00
<a href="#">wireshark-1.2.1-2.el6.1</a>	ON_REVIEW	<a href="#">RHEL-6.0</a>	2009-10-02 13:20:35

[Comments and tickets here](#)

Copyright © Red Hat, Inc. All rights reserved.

## Overview

### Assigned reviews

2 found. [\[show overview\]](#)

Pages: 1

ID	State	Product version	SRPM	Maintainer
<a href="#">1973</a>	ON_REVIEW	RHEL-6.0	<a href="#">atlas-3.8.3-12.el6</a>	plautrba
<a href="#">1777</a>	ON_REVIEW	RHEL-6.0	<a href="#">at-3.1.10-36.el6</a>	mmaslano

[Comments and tickets here](#)

Copyright © Red Hat, Inc. All rights reserved.

## Overview

**Team packages under review**  
458 found. [\[show overview\]](#)

Pages: [1](#) [2](#) [3](#) [4](#) [5](#) [6](#) [7](#) [8](#) [9](#) [10](#)

Review	SRPM	Product version	Maintainer	Reviewer	State
<a href="#">dovecot-1.2.3-1.el6 (NEW)</a>	<a href="#">dovecot-1.2.3-1.el6</a>	<a href="#">RHEL-6.0</a>	<a href="#">mhlavink</a>	None	NEW
<a href="#">lksctp-tools-1.0.10-2.el6 (NEW)</a>	<a href="#">lksctp-tools-1.0.10-2.el6</a>	<a href="#">RHEL-6.0</a>	<a href="#">jsafrane</a>	None	NEW
<a href="#">ipmitool-1.8.11-2.el6 (NEW)</a>	<a href="#">ipmitool-1.8.11-2.el6</a>	<a href="#">RHEL-6.0</a>	<a href="#">jsafrane</a>	None	NEW
<a href="#">migrationtools-47-4.el6 (NEW)</a>	<a href="#">migrationtools-47-4.el6</a>	<a href="#">RHEL-6.0</a>	<a href="#">jsafrane</a>	None	NEW
<a href="#">OpenIPMI-2.0.16-3.el6 (NEW)</a>	<a href="#">OpenIPMI-2.0.16-3.el6</a>	<a href="#">RHEL-6.0</a>	<a href="#">jsafrane</a>	None	NEW
<a href="#">nmap-5.00-2.el6 (NEW)</a>	<a href="#">nmap-5.00-2.el6</a>	<a href="#">RHEL-6.0</a>	<a href="#">mhlavink</a>	None	NEW
<a href="#">s390utils-1.8.2-5.el6 (NEW)</a>	<a href="#">s390utils-1.8.2-5.el6</a>	<a href="#">RHEL-6.0</a>	<a href="#">dhorak</a>	None	NEW
<a href="#">cpio-2.10-3.el6 (ON_REVIEW)</a>	<a href="#">cpio-2.10-3.el6</a>	<a href="#">RHEL-6.0</a>	<a href="#">ovasik</a>	None	ON_REVIEW
<a href="#">libwvstreams-4.6-4.el6 (ON_REVIEW)</a>	<a href="#">libwvstreams-4.6-4.el6</a>	<a href="#">RHEL-6.0</a>	<a href="#">ovasik</a>	None	ON_REVIEW
<a href="#">sysvinit-2.87-1.dsf.fc12 (ON_REVIEW)</a>	<a href="#">sysvinit-2.87-1.dsf.fc12</a>	<a href="#">RHEL-6.0</a>	<a href="#">plautrba</a>	<a href="#">mmaslano</a>	ON_REVIEW
<a href="#">powerpc-utils-1.2.2-1.el6 (NEW)</a>	<a href="#">powerpc-utils-1.2.2-1.el6</a>	<a href="#">RHEL-6.0</a>	<a href="#">rrakus</a>	None	NEW
<a href="#">xmlrpc-c-1.16.6-3.1582.el6 (ON_REVIEW)</a>	<a href="#">xmlrpc-c-1.16.6-3.1582.el6</a>	<a href="#">RHEL-6.0</a>	<a href="#">jzeleny</a>	None	ON_REVIEW

## Overview

### Reviews being done by team ([Set reviewers](#))

7 found. [\[show overview\]](#)

Pages: 1

Review	SRPM	Product version	Maintainer	Reviewer	State
<a href="#">cppunit-1.12.1-3.el6 (VERIFIED)</a>	<a href="#">cppunit-1.12.1-3.el6</a>	<a href="#">RHEL-6.0</a>	<a href="#">plautrba</a>	<a href="#">mmaslano</a>	VERIFIED
<a href="#">at-3.1.10-36.el6 (ON_REVIEW)</a>	<a href="#">at-3.1.10-36.el6</a>	<a href="#">RHEL-6.0</a>	<a href="#">mmaslano</a>	<a href="#">rvokal</a>	ON_REVIEW
<a href="#">sysvinit-2.87-1.dsf.fc12 (ON_REVIEW)</a>	<a href="#">sysvinit-2.87-1.dsf.fc12</a>	<a href="#">RHEL-6.0</a>	<a href="#">plautrba</a>	<a href="#">mmaslano</a>	ON_REVIEW
<a href="#">environment-modules-3.2.6-8.el6 (VERIFIED)</a>	<a href="#">environment-modules-3.2.6-8.el6</a>	<a href="#">RHEL-6.0</a>	<a href="#">plautrba</a>	<a href="#">mmaslano</a>	VERIFIED
<a href="#">atlas-3.8.3-12.el6 (ON_REVIEW)</a>	<a href="#">atlas-3.8.3-12.el6</a>	<a href="#">RHEL-6.0</a>	<a href="#">plautrba</a>	<a href="#">rvokal</a>	ON_REVIEW
<a href="#">crontabs-1.10-32.fc13 (VERIFIED)</a>	<a href="#">crontabs-1.10-32.fc13</a>	<a href="#">RHEL-6.0</a>	<a href="#">mmaslano</a>	<a href="#">rvokal</a>	VERIFIED
<a href="#">ctags-5.7-5.el6 (ON_REVIEW)</a>	<a href="#">ctags-5.7-5.el6</a>	<a href="#">RHEL-6.0</a>	<a href="#">mmaslano</a>	<a href="#">plautrba</a>	ON_REVIEW

[Comments and tickets here](#)

Copyright © Red Hat, Inc. All rights reserved.

## Team Core Services - Brno (rvokal) reviews settings

Assign reviewer to each package from your group.

<b>abrt-0.0.7.1-1.el6 (NEW):</b>	atkac
<b>acl-2.2.47-5.el6 (NEW):</b>	.....
<b>acpid-1.0.10-2.el6 (NEW):</b>	dhorak
<b>akonadi-1.2.0-2.el6 (NEW):</b>	.....
<b>am-utils-6.1.5-14.el6 (NEW):</b>	.....
<b>arptables_jf-0.0.8-16.el6 (NEW):</b>	.....
<b>arpwatch-2.1a15-11.el6 (NEW):</b>	.....
<b>aspell-0.60.6-7.el6 (NEW):</b>	.....
<b>at-3.1.10-36.el6 (ON_REVIEW):</b>	rvokal
<b>atlas-3.8.3-12.el6 (ON_REVIEW):</b>	rvokal
<b>attr-2.4.43-4.el6 (NEW):</b>	.....
<b>authd-1.4.3-27.el6 (NEW):</b>	.....

Logged in as rvokal | [log out](#) | [help](#)

## Review list

Package name:  Reviewer:   
Maintainer:  Product:   
Qe group:  State:

Records 1 - 3 of 3.

ID	Package	Reviewer	Maintainer	State
<a href="#">cppunit-1.12.1-3.el6 (VERIFIED)</a>	cppunit	mmaslano	plautrba	VERIFIED
<a href="#">crontabs-1.10-32.fc13 (VERIFIED)</a>	crontabs	rvokal	mmaslano	VERIFIED
<a href="#">environment-modules-3.2.6-8.el6 (VERIFIED)</a>	environment-modules	mmaslano	plautrba	VERIFIED

Records 1 - 3 of 3.

[Comments and tickets here](#)

Copyright © Red Hat, Inc. All rights reserved.

## Reports

**Type:** Feature usage report

**Feature type:** Crypto

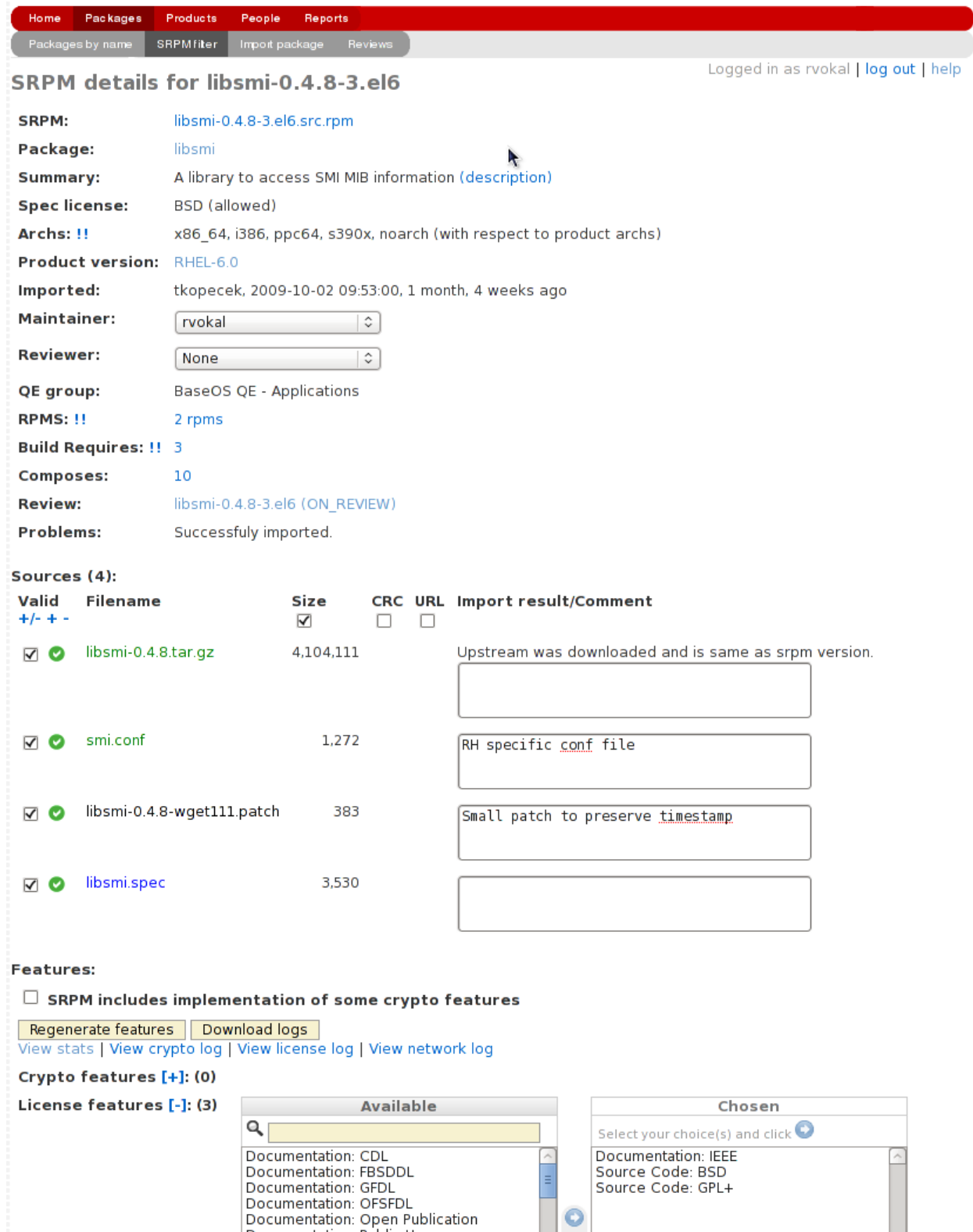
**Product version:** All

Generate

```
rsync-3.0.0-3.el6  
wireshark-1.2.1-2.el6.1  
  
Feature 'Crypto:PKI:RSA' found in following packages [308 total]:  
ImageMagick-6.5.4.7-3.el6  
NetworkManager-0.7.996-1.git20090826.el6  
NetworkManager-0.7.996-5.git20091021.el6  
NetworkManager-openvpn-0.7.996-1.git20090828.el6  
NetworkManager-openvpn-0.7.996-4.git20090923.el6  
ORBit2-2.14.17-3.el6  
PyOpenGL-3.0.0-2.el6  
PyQt4-4.5.4-1.el6  
PyXML-0.8.4-15.1  
Pyrex-0.9.8.4-4.el6  
SOAPpy-0.11.6-10.el6  
Xaw3d-1.5E-15.el6  
abrt-0.0.7.1-1.el6  
adaptx-0.9.13-8.el6  
akonadi-1.2.0-2.el6  
am-utils-6.1.5-14.el6  
anthy-9100h-6.1.el6  
apr-1.3.8-1.el6
```

# The Import

- Verify NVR
- Tick all files
  - Tarball is checked automatically
  - Patches changing behavior from upstream should be commented
- Review crypto functions, licenses, net features
  - If you need to add additional feature, contact rel-eng, parser can regenerate features
  - Review logs for false-positives



Home Packages Products People Reports

Packages by name SRPM filter Import package Reviews

Logged in as rvokal | [log out](#) | [help](#)

## SRPM details for libsmi-0.4.8-3.el6

**SRPM:** [libsmi-0.4.8-3.el6.src.rpm](#)

**Package:** [libsmi](#)

**Summary:** A library to access SMI MIB information ([description](#))

**Spec license:** BSD (allowed)

**Archs: !!** x86\_64, i386, ppc64, s390x, noarch (with respect to product archs)

**Product version:** [RHEL-6.0](#)

**Imported:** tkopecek, 2009-10-02 09:53:00, 1 month, 4 weeks ago

**Maintainer:**

**Reviewer:**

**QE group:** BaseOS QE - Applications

**RPMS: !!** [2 rpms](#)

**Build Requires: !!** [3](#)

**Composes:** [10](#)

**Review:** [libsmi-0.4.8-3.el6 \(ON\\_REVIEW\)](#)

**Problems:** Successfully imported.

**Sources (4):**

Valid	Filename	Size	CRC	URL	Import result/Comment
<input checked="" type="checkbox"/>	<a href="#">libsmi-0.4.8.tar.gz</a>	4,104,111	<input type="checkbox"/>	<input type="checkbox"/>	Upstream was downloaded and is same as srpm version. <input type="text"/>
<input checked="" type="checkbox"/>	<a href="#">smi.conf</a>	1,272	<input type="checkbox"/>	<input type="checkbox"/>	RH specific <a href="#">conf</a> file <input type="text"/>
<input checked="" type="checkbox"/>	<a href="#">libsmi-0.4.8-wget111.patch</a>	383	<input type="checkbox"/>	<input type="checkbox"/>	Small patch to preserve <a href="#">timestamp</a> <input type="text"/>
<input checked="" type="checkbox"/>	<a href="#">libsmi.spec</a>	3,530	<input type="checkbox"/>	<input type="checkbox"/>	<input type="text"/>

**Features:**

SRPM includes implementation of some crypto features

[View stats](#) | [View crypto log](#) | [View license log](#) | [View network log](#)

**Crypto features [+]: (0)**

**License features [-]: (3)**

**Available**

- Documentation: CDL
- Documentation: FBSDDL
- Documentation: GFDL
- Documentation: OFSFDL
- Documentation: Open Publication

**Chosen**

Select your choice(s) and click

- Documentation: IEEE
- Source Code: BSD
- Source Code: GPL+

## The Review

- Verify package and it's Fedora/RHEL review bug  
(Click on SRPM link to go to the Import page)
- Review added/removed features (show autocomments)
- **Items labeled with !! are guesses based on srpm and they are only informative = might be wrong**
- Change “State” to VERIFIED when finished

Home Packages Products People Reports  
Packages by name SRPM filter Import package Reviews

Logged in as rvokal | [log out](#) | [help](#)

### Review: #976

**Package:** [libsmi](#) (libsmi, libsmi-devel !!)  
**Summary:** A library to access SMI MIB information  
**Product version:** RHEL-6.0  
**Reported by:** tkopecek, 2009-10-02 09:53:00, 1 month, 4 weeks ago  
**Import results:** Successfully imported.  
**State:**    
**Reviewer:**    
**Bugzilla review ID:**  [Find BZ#, BZ review](#)  
**Valid spec file:**

---

**SRPM:** [libsmi-0.4.8-3.el6](#)  
**Maintainer:** rvokal  
**QE group:** BaseOS QE - Applications  
**Spec license:** BSD (allowed)  
**Archs: !!** x86\_64, i386, ppc64, s390x, noarch  
**Documentation:** IEEE  
**Network Protocol:** IPv6, TCP socket, UDP socket  
**Source Code:** BSD, GPL+

---

#### Reviews

1. [libsmi-0.4.8-3.el6](#) (ON\_REVIEW) (ON\_REVIEW)

**Comments (17):** [show/hide autocomments](#)

---

Comment:

[Comments and tickets here](#)  
Copyright © Red Hat, Inc. All rights reserved.



Questions?