

Infrastructure as Code

I Get By With a Little Help From my Friends

Josh Swanson

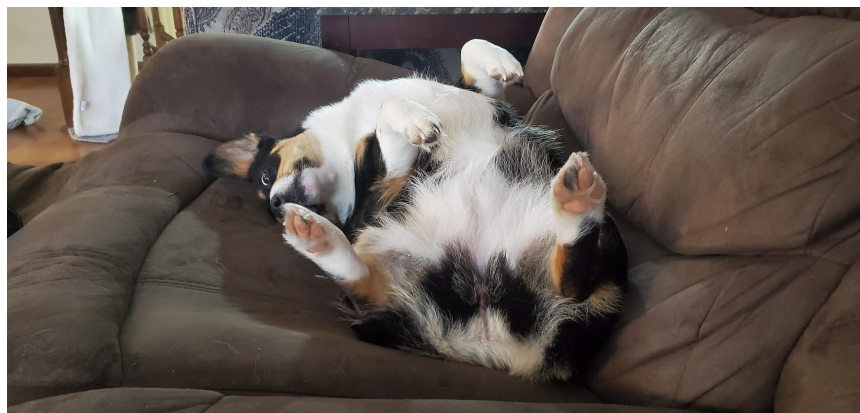
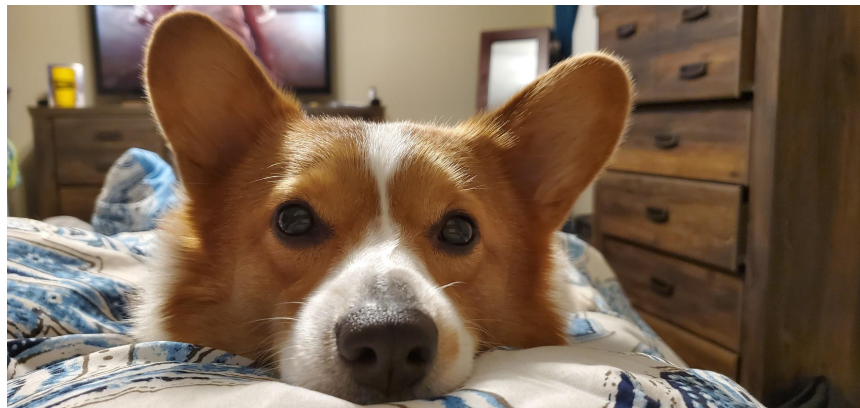
Platform Specialist Solution Architect

joshswanson@redhat.com



Josh Swanson

joshswanson@redhat.com





Agenda:

- Setting the Stage
 - Ansible Automation Platform
 - Infrastructure as Code
- Telling the Story
 - “Red Hat Enterprises”



Setting the Stage

Why the Ansible Automation Platform?



Red Hat
Ansible Automation
Platform

Why the Ansible Automation Platform?



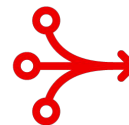
POWERFUL

Orchestrate complex processes at enterprise scale.



AGENTLESS

Integrate easily with nearly any technology across hybrid environments.



SIMPLE

Simplify automation creation and management across multiple domains.

Why use an automation platform?



Red Hat
Ansible Automation
Platform



Red Hat Ansible Automation Platform



Creators



Operators



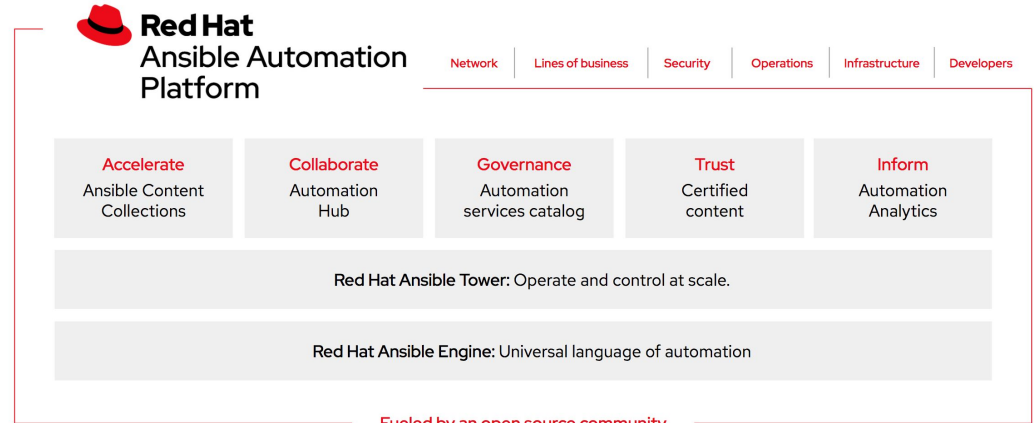
Consumers

Fueled by an open source community

What Is Ansible Automation Platform?

Ansible Automation Platform

is Red Hat's enterprise automation platform to automate the provisioning and configuration of modern enterprise IT environments, from compute resources, like VMs and containers, to networks, all the way to the application layer.



Domain Experts



Content Creators



Operators



Users

Automate the deployment and management of your entire IT footprint

Do this...

Orchestrate

Manage
configurations

Deploy
applications

Provision

Deliver
continuously

Secure and
comply

On these...



Firewalls



Load balancers



Applications



Containers



Clouds



Servers



Infrastructure



Storage



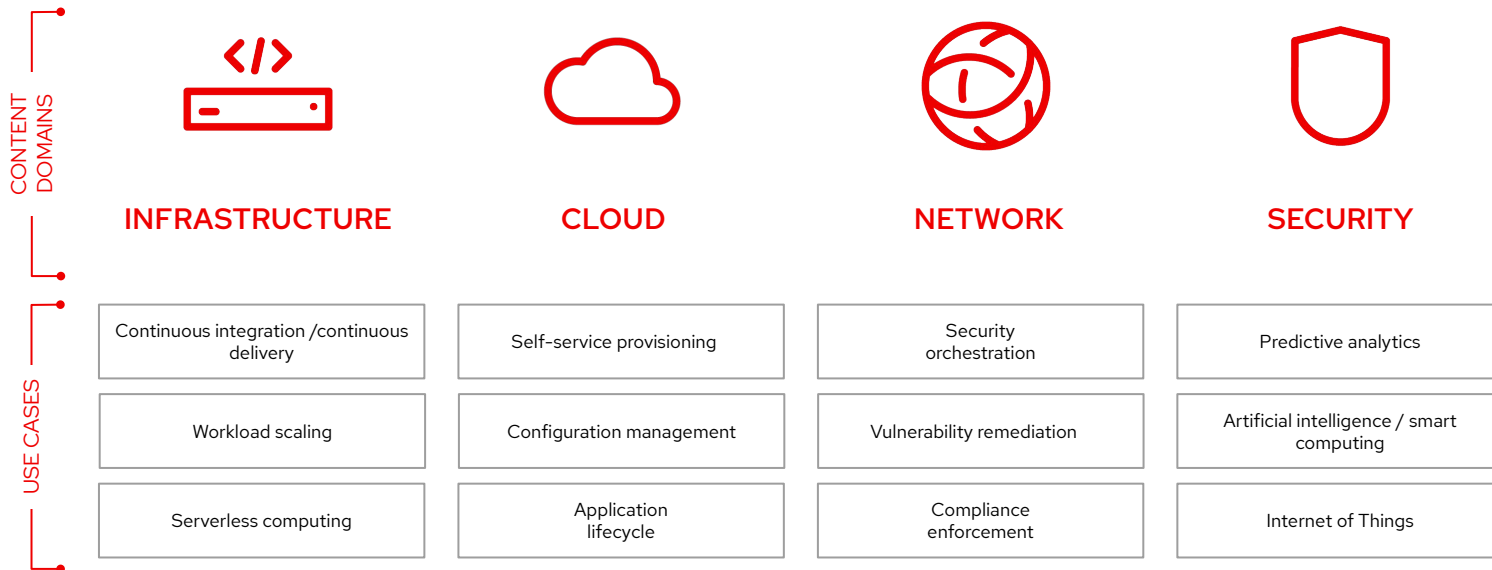
Network devices



And more ...

Automate Everything You Need

Many use cases across multiple domains



Certified Partner Automation Content

Many use cases across multiple domains



INFRASTRUCTURE



Red Hat



NetApp™



IBM



CLOUD



aws



Google



Microsoft



NETWORK

ARISTA



CISCO™



f5®



SECURITY



Check Point
SOFTWARE TECHNOLOGIES LTD



CYBERARK®

FORTINET®

Ansible automates the technologies you use

Cloud

AWS
Azure
Digital Ocean
Google
OpenStack
Rackspace
+more

Red Hat
Products
RHEL
Satellite
Insights
+more

Virt & Container

Docker
Kubernetes
OpenStack
OpenShift
VMware
+more

Storage
Infinidat
Netapp
Pure Storage
+more

Windows

ACLs
Files
Packages
IIS
Registry
Shares
Services
Configs
Users
Domains
Updates
+more

Network

Arista
Aruba
Bigswitch
Cisco
Ericsson
F5
FRR
Juniper
Meraki
OpenvSwitch
Ruckus
VyOS
+more

Security

Checkpoint
Cisco
CyberArk
F5
Fortinet
Juniper
IBM
Palo Alto
Snort
+more

Monitoring

Dynatrace
Datadog
LogicMonitor
New Relic
Sensu
+more

Devops
Jira
GitHub
Vagrant
Jenkins
Slack
+more



Setting the Stage: Red Hat Enterprises



Red Hat Enterprises: A Startup Hotel Company

Red Hat Enterprises Resource Request

Initiating the Process



Lines of Business

“We need a new SAP HANA database for development and testing. This will directly support business critical functions. Please expedite if possible, we need this by close of business tomorrow.”



Josh Swanson

SAP BASIS Administrator

Red Hat Enterprises Resource Request

Reviewing the Last Time this Process was Run



Josh Swanson
SAP BASIS Administrator

- 5 total teams involved:
 - Storage
 - Network
 - Virtualization
 - RHEL Admin/Ops
 - Security
- 8 tickets to those teams in ServiceNow
 - Average closure time of 2 business days
 - Total time: 16 days
- Another 4 days for my portion
 - Bit of re-work needed
 - Have to be careful: re-requesting resources would take another ~16 business days
- The business wants this done by tomorrow EOD...

Red Hat Enterprises Key Stakeholders

It takes a village to raise a server



Network

Mike McRill

The Null Route, Gigaessi, Breaker of Bonds,
Father of Packets and the Rightful King of the
Seven Clouds



Operating System

Jon McDonald

Red Hat Enterprise Linux Architect



Security

Dean Peterson

The Greatest Security Architect of All Time



Storage

Laine Minor

Storage Architect



Virtualization

Ryan Nix

VMware Architect



SAP BASIS

Josh Swanson

SAP BASIS Administrator

Red Hat Enterprises Provisioning Workflow

It takes a village to raise a server



SAP BASIS



Network



Virtualization



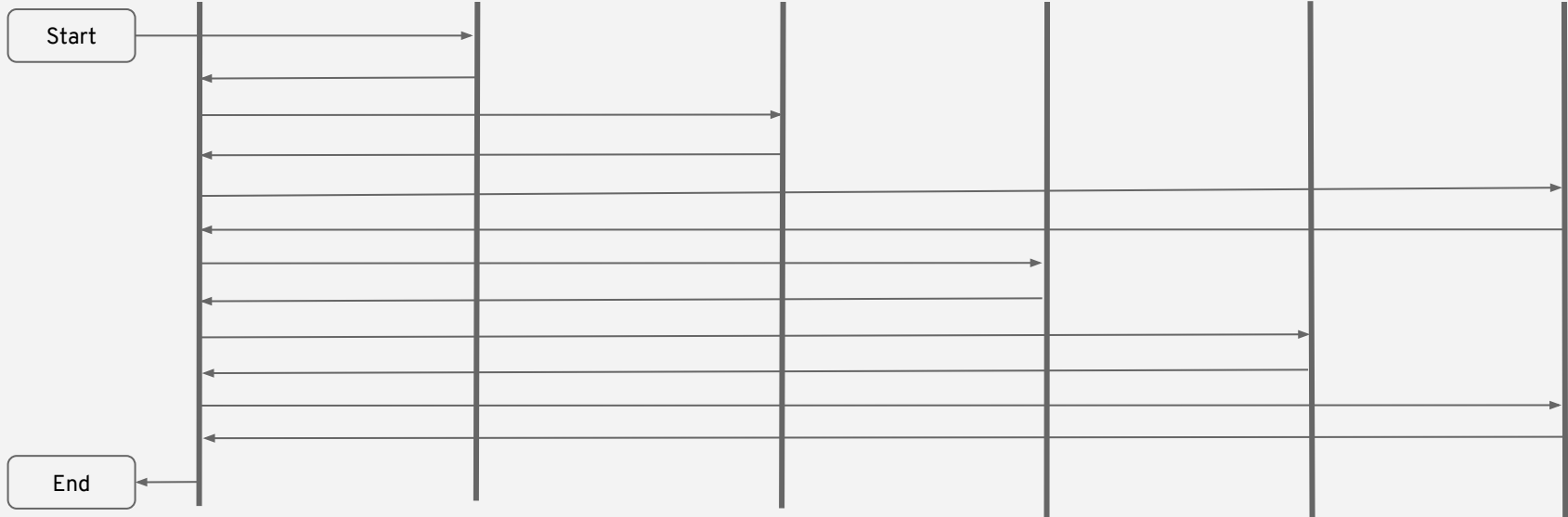
Security



Storage



Operating System



Red Hat Enterprises Key Stakeholders

On the Phone



Network

Mike McRill

The Null Route, Gigaessi, Breaker of Bonds,
Father of Packets and the Rightful King of the
Seven Clouds



SAP BASIS

Josh Swanson

SAP BASIS Administrator

Red Hat Enterprises Key Stakeholders

On the Phone



Virtualization

Ryan Nix
VMware Architect



SAP BASIS

Josh Swanson
SAP BASIS Administrator

Red Hat Enterprises Provisioning Workflow

Revised Workflow With The Ansible Automation Platform



SAP BASIS



Network



Virtualization



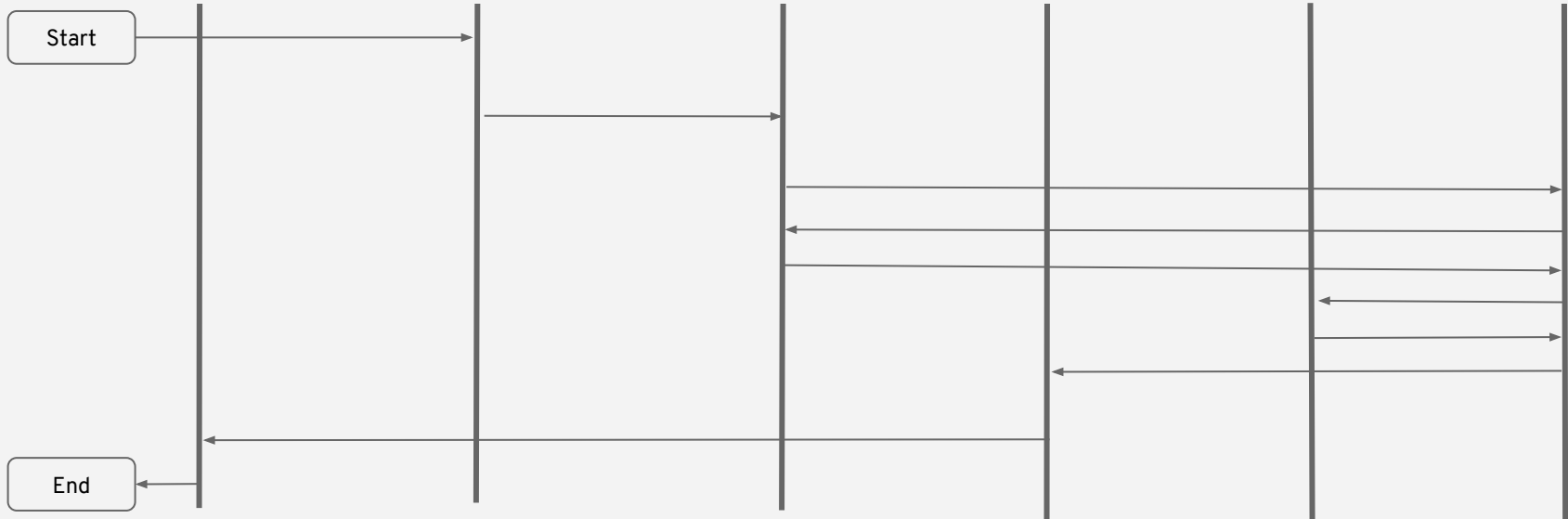
Security



Storage



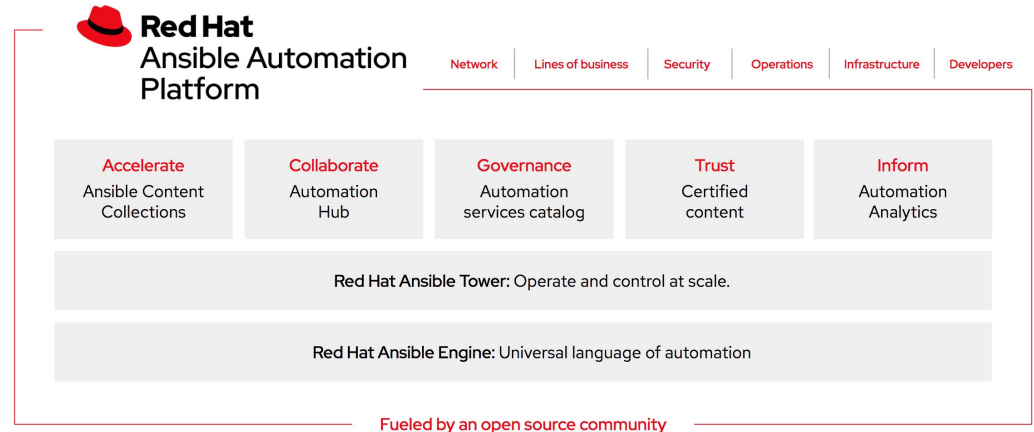
Operating System



What Is Ansible Automation Platform?

Ansible Automation Platform

is Red Hat's enterprise automation platform to automate the provisioning and configuration of modern enterprise IT environments, from compute resources, like VMs and containers, to networks, all the way to the application layer.



Domain Experts



Content Creators



Operators



Users

Thank you!



[linkedin.com/company/red-hat](https://www.linkedin.com/company/red-hat)



[youtube.com/user/RedHatVideos](https://www.youtube.com/user/RedHatVideos)



[facebook.com/redhatinc](https://www.facebook.com/redhatinc)



twitter.com/RedHat