

ANSIBLE

Ansible Montreal Meetup

Michael Lessard

Principal Solutions Architect

mlessard@redhat.com

  michaellessard

Avril, 2019

AGENDA

18:00 - 18:30

Bienvenue et nouvelles Ansible par Michael Lessard, Red Hat
Ansible collections, Gonéri Le Bouder, Red Hat

18:30 - 19:00

18:30: David Moreau-Simard, Red Hat

Une nouvelle API pour consulter et intégrer les résultats de vos playbooks Ansible avec ARA 1.0

19:00 : : : : : Pause : : : : :

19:15 - 20:00

Mohammed Naser, VEXXHOST

Learn about what NOT to do when you're building out your infrastructure with Ansible: from CI/CD, management (monorepo vs. many small roles with an integrated repo), security (run it from laptops vs CD vs a jumpbox) and more !

20:00 - 20:30: Questions, réseautage et conclusion du meetup

fibrenoire



ANSIBLE MEETUP

Cherche présentateurs :

- Bonne histoire autour d'Ansible
- Ce que vous faites avec Ansible
- Vos trouvailles , etc ...

mlessard@redhat.com
dmsimard@redhat.com





SIMPLE

- Human readable automation
- No special coding skills needed
- Tasks executed in order
- Usable by every team
- Get productive quickly**



POWERFUL

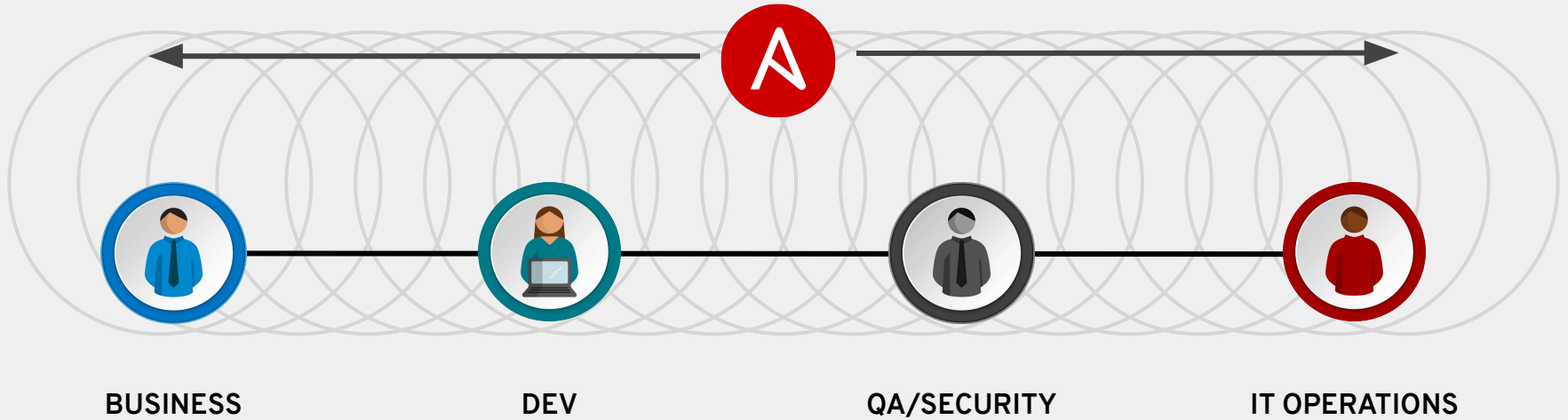
- App deployment
- Configuration management
- Workflow orchestration
- Network automation
- Orchestrate the app lifecycle**



AGENTLESS

- Agentless architecture
- Uses OpenSSH & WinRM
- No agents to exploit or update
- Get started immediately
- More efficient & more secure**

ANSIBLE IS THE UNIVERSAL LANGUAGE



Ansible is the first **automation language** that can be read and written across IT.

Ansible is the only **automation engine** that can automate the entire application lifecycle and continuous delivery pipeline.

v1 - Set config file to use on boot

1. Write multiple configuration files
 - For each environment/region
2. Inspect metadata on boot and use the matching config file



v1 - Set config file to use on boot

1. Write multiple configuration files
 - For each environment/region
2. Inspect metadata on boot and use the matching config file

36,000+
Stars on GitHub

2100+
Ansible modules

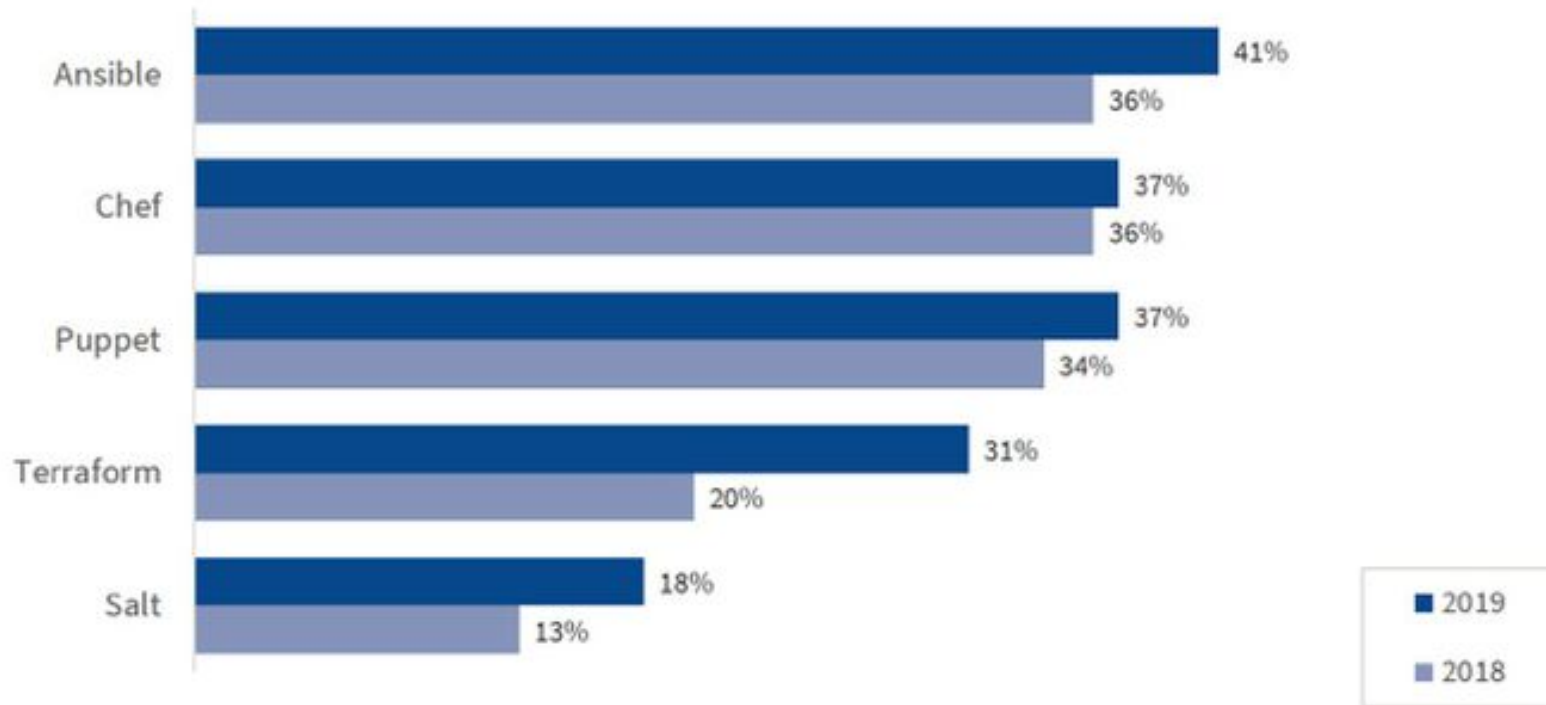
500,000+
Downloads a month

GitHub

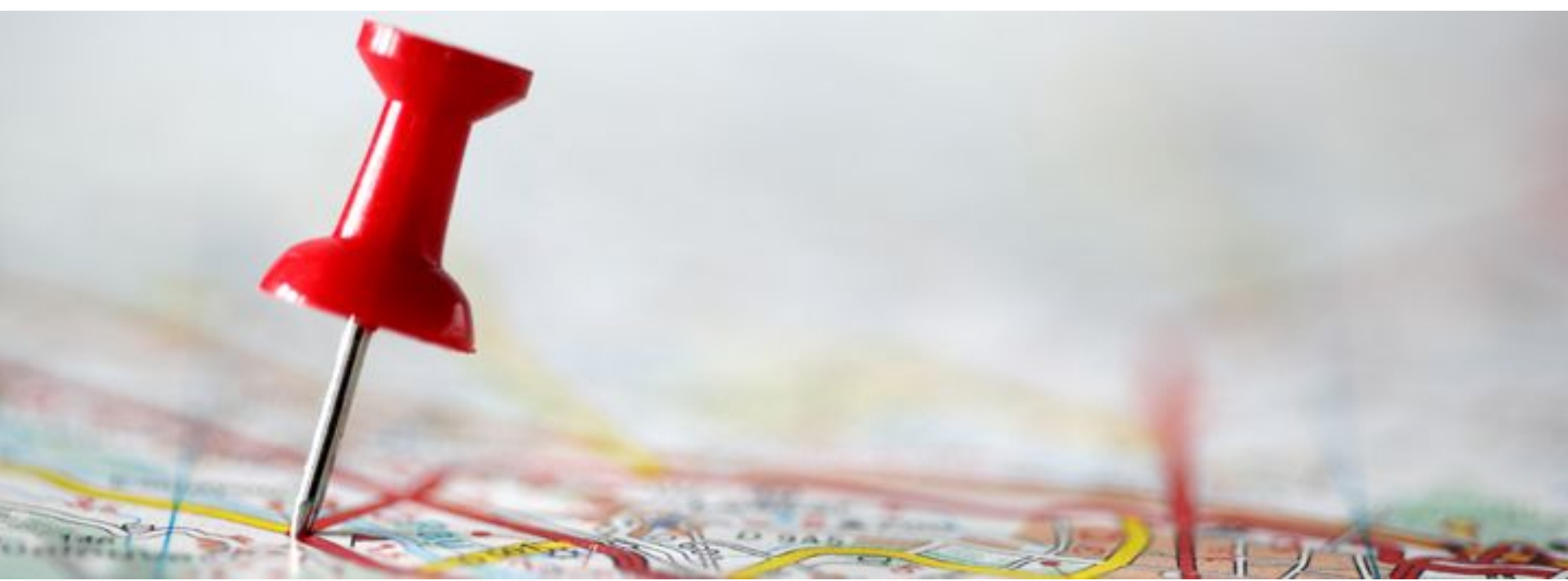
STARS	TECHNO	CONTRIBUTEURS
36,516	Ansible	4,335
18,269	Vagrant	882
16,401	Terraform	1,259
9,809	Salt	2,233 ↓
5,745	Chef	563 ↓
5,249	Puppet	513

Configuration Tools Used

% of All Respondents



Source: RightScale 2019 State of the Cloud Report from Flexera



SOMMES-NOUS À LA BONNE PLACE ?

LINUX AUTOMATION

150+
Linux Modules

AUTOMATE EVERYTHING LINUX

Red Hat Enterprise Linux, BSD,
Debian, Ubuntu and many more!

ONLY REQUIREMENTS:
Python 2 (2.6 or later)
or Python 3 (3.5 or later)

ansible.com/get-started

WINDOWS AUTOMATION

90+

Windows
Modules

1,300+

Powershell DSC
resources

ansible.com/windows

ANSIBLE NETWORK AUTOMATION

50

Network
Platforms

700+

Network
Modules

12*

Galaxy
Network Roles

ansible.com/for/networks
galaxy.ansible.com/ansible-network

CLOUD AUTOMATION

800+

Cloud
Modules

30+

Cloud Platforms

ansible.com/cloud



ANSIBLE 2.8

BETA

GA PLANNED : 16/05/2019

04/04/2019	:: Alpha 1
11/04/2019	:: Beta 1
25/4/2019	:: Release Candidate 1
2/5/2019	:: Release Candidate 2 (if needed)
9/5/2019	:: Release Candidate 3 (if needed)
16/05/201	:: Release

Python interpreter discovery

The first time a Python module runs on a target, Ansible will attempt to discover the proper default Python interpreter to use for the target platform/version (instead of immediately defaulting to `/usr/bin/python`). Support for RHEL 8.

Experimental support for Ansible Collections

Ansible content can now be packaged in a collection and addressed via namespaces. This allows for easier sharing, distribution, and installation of bundled modules/roles/plugins, and consistent rules for accessing specific content via namespaces.

Tons of new modules and bugfixes

MODULE ADDITIONS

CLOUD

AWS (7 new modules : ec2_launch_template, aws_secret, ...)

Azure (69 new modules : azure_rm_mariadbserver, azure_rm_postgresqlconfiguration ...)

GCP (33 new modules : gcp_resourcemanager_project, gcp_iam_role, ...)

WINDOWS (13 new modules)

win_partition

win_hosts

win_dns_record

win_user_profile

...

MORE MODULES FOR :

NetAPP (20 new modules)

F5 (35 new modules)

VMware (29 new modules)

FortiManager (25 new modules)

Fortios (219 new modules)

<https://github.com/ansible/ansible/blob/devel/changelogs/CHANGELOG-v2.8.rst>



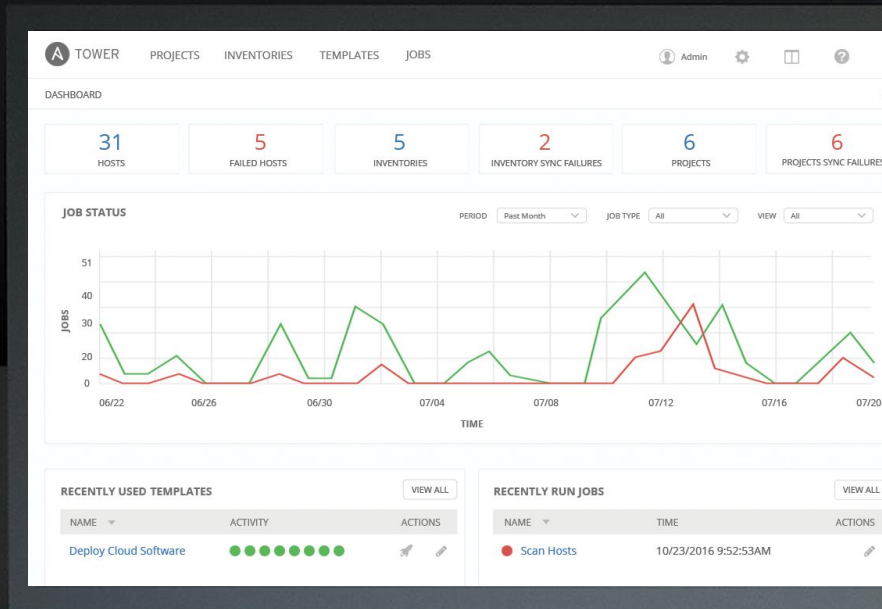
RED HAT[®] ANSIBLE[®] Tower 3.4

GA :: JANUARY 9TH 2019

SCALE

MANAGE

CONNECT

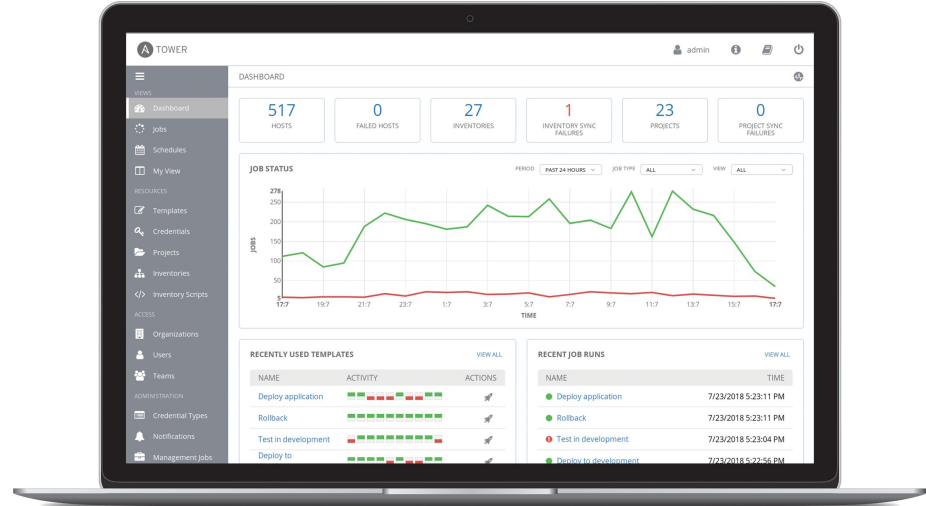




WHAT IS ANSIBLE TOWER?

Ansible Tower is an **enterprise framework** for controlling, securing and managing your Ansible automation – with a **UI and RESTful API**.

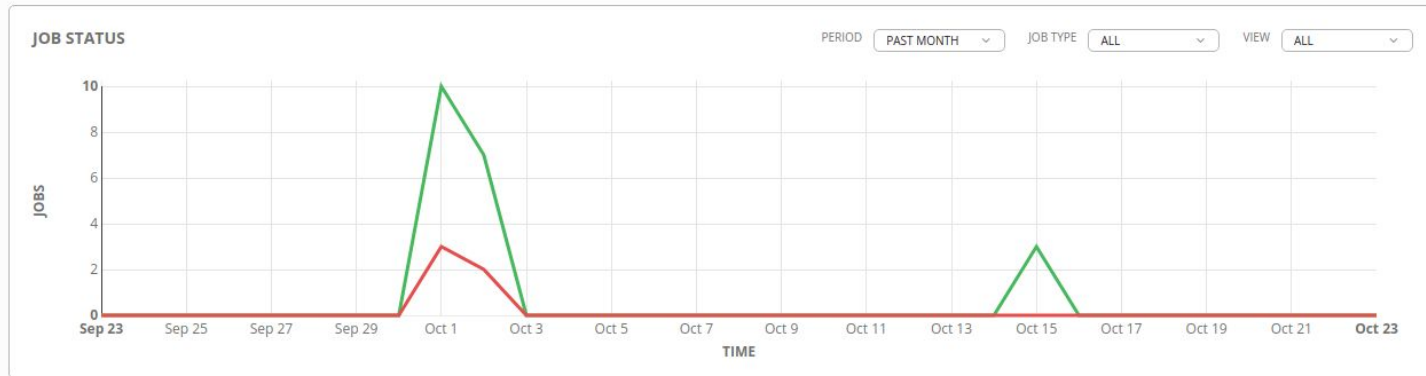
- **Role-based access control** keeps environments secure, and teams efficient.
- Non-privileged users can **safely deploy** entire applications with **push-button deployment** access.
- All Ansible automations are **centrally logged**, ensuring **complete auditability and compliance**.



- Dashboard
- Jobs
- Schedules
- My View
- RESOURCES
- Templates
- Credentials
- Projects
- Inventories
- Inventory Scripts
- ACCESS
- Organizations
- Users
- Teams
- ADMINISTRATION
- Credential Types
- Notifications
- Management Jobs
- Instance Groups
- Applications

DASHBOARD

3 HOSTS	0 FAILED HOSTS	4 INVENTORIES	0 INVENTORY SYNC FAILURES	7 PROJECTS	0 PROJECT SYNC FAILURES
------------	-------------------	------------------	------------------------------	---------------	----------------------------



RECENTLY USED TEMPLATES [VIEW ALL](#)

NAME	ACTIVITY	ACTIONS
Create RHEL VM on Amazon	███████████	
Provision LinkLight	███████████	
MSSQL_create_database	███████████	
MSSQL_install_on_RHEL7	███████████	
MSSQL_Uninstall	███████████	

RECENT JOB RUNS [VIEW ALL](#)

NAME	TIME
Create RHEL VM on Amazon	16/10/2018 11:34:30
Provision LinkLight	3/10/2018 14:03:18
Provision LinkLight	3/10/2018 13:43:05
Provision LinkLight	3/10/2018 09:20:08
Provision LinkLight	2/10/2018 17:17:24

WHAT'S NEW IN ANSIBLE TOWER 3.4?

Enhanced workflows

Job distribution via job slicing

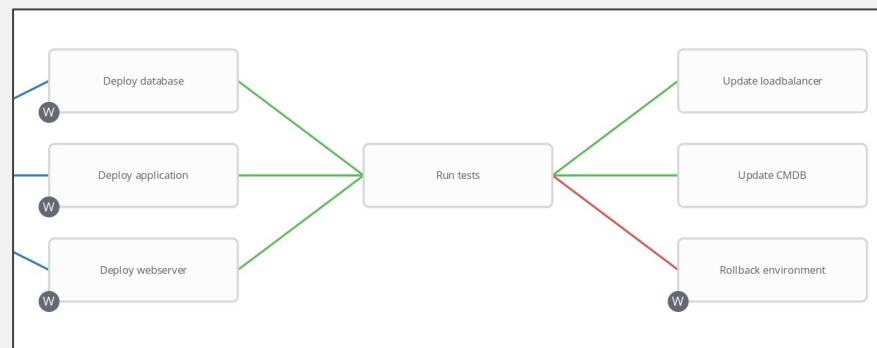
Support for deployments with FIPS enabled

ENHANCED WORKFLOWS

NESTED WORKFLOWS

- Application teams can control their application deployment, while other teams reuse them in their own workflows
- Create generic backup, rollback, or other workflows that can be used repeatedly in larger orchestration

Nested workflows allow easy automation reuse across applications, environments, and teams, allowing for complex provisioning, deployment, and orchestration automation.



ENHANCED WORKFLOWS

WORKFLOW-LEVEL INVENTORY

- Build reusable deployment workflows and delegate them for any environment
- Define an inventory to use at workflow definition time, or at launch time
- Can apply to both jobs and workflows inside the workflow

Workflow-level inventory allows for deployment, configuration, remediation, and many other classes of automation to be easily reused across any environment.

PROMPT ✕

INVENTORY SURVEY PREVIEW

SELECTED Prod ✕ REVERT

⚠ This inventory is applied to all job template nodes that prompt for an inventory.

SEARCH 🔍 KEY

NAME ▲

Dev

Prod

Test

ITEMS 1 - 3

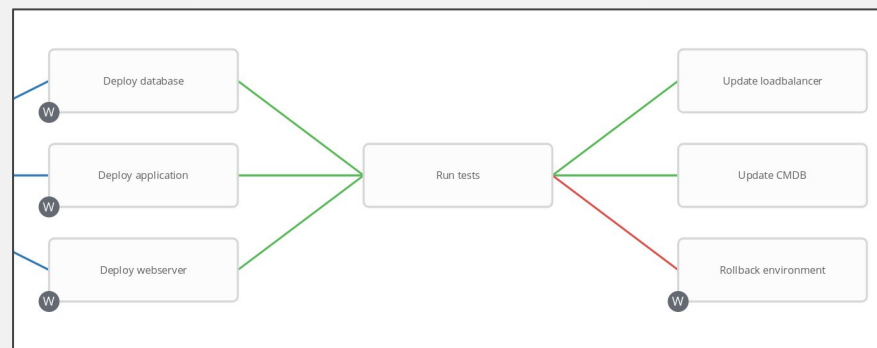
CANCEL NEXT

ENHANCED WORKFLOWS

WORKFLOW CONVERGENCE NODES

- Wait for any number of steps to finish before proceeding
- Allows for built-in synchronization points, easy result collection, and simplified error handling

Workflow convergence makes it easier than ever to have your Ansible automation workflows model and match your actual deployment processes.



JOB DISTRIBUTION VIA JOB SLICING

BEFORE ANSIBLE TOWER 3.4

- Any playbook run would run one `ansible-playbook` process on one cluster node
- Jobs run across thousands of machines could potentially starve that cluster node's resources, or fail due to memory contention
- Job resizing could be a complicated manual process

WITH TOWER 3.4 JOB SLICING

Jobs have a configurable number of slices. Each slice will be run as a separate `ansible-playbook` run, and slices will be distributed across the Tower cluster.

- Run fact gathering, configuration, and more across thousands of machines with ease
- Increase both job throughput and job reliability

NOTE: Job slicing is only appropriate when each host's automation is independent of other hosts

SUPPORT FOR FIPS-ENABLED ENVIRONMENTS

DEPLOY INTO SECURE ENVIRONMENTS

Ansible Tower now supports deployment on Red Hat Enterprise Linux 7 when in FIPS mode. This allows Tower to run in highly-regulated and hardened public sector environments





4.0 - 28 mars 2019

SEPTEMBER 24-26

#ANSIBLEFEST ATLANTA 2019

KEEP ME UPDATED



redhat

ANSIBLE



1K



<https://www.redhat.com/en/services/training/learning-subscription>



[Products](#)

[Solutions](#)

[Services & support](#)

[Red Hat & open source](#)

Red Hat Learning Subscription

Fill skills gaps and address business challenges by taking advantage of unlimited access to our comprehensive curriculum.

[START YOUR FREE TRIAL](#)

Already have a Red Hat Learning Subscription account?

[LOG IN](#)



THANK YOU



plus.google.com/+RedHat



facebook.com/redhatinc



linkedin.com/company/red-hat



twitter.com/RedHatNews



youtube.com/user/RedHatVideos